

LAKE THETIS W.A.

This boardwalk designed and constructed by the Department of Environment and Conservation, Western Australia.

The walkway is an excellent example of how Standard 38x38 grid **EnviroGrate** 38x38 and **EnviroCT** cover top grating can be integrated to form sweeping, aesthetically pleasing curves in an artistic design that complements the natural surrounds of the lake.

The cover top grating was cut with slight angles to provide clean lines while promoting the turns in the deck.

Our **EnviroTread** Custom design landing panels were used at access points.

The dark grey blends calmly with the terrain and does not detract from the view but somehow enhances it, inviting you to explore the distant surrounds.

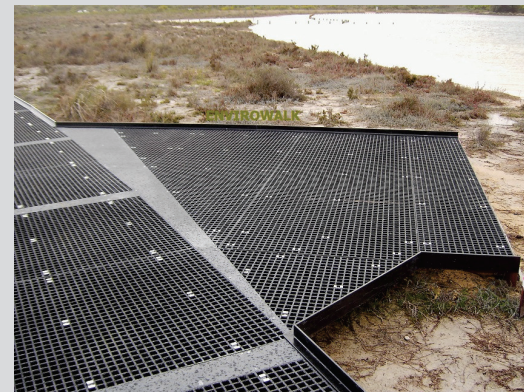
This is an excellent blend of nature and contemporary products and the rainbow is a fitting compliment from Mother Nature!

This is just one of numerous projects where **Envirowalk** high quality FRP products have been used in Western Australia.

Our **EnviroTread** F-kick rail had been designed specifically for this project but poor installation methods and lack of protective PU coating (despite our recommendations) resulted in this degrading rapidly.

We now use the photo of the F-kick rail at right to impress upon our structural customers the need to provide protective coating on all pultruded profiles. Poor installation method resulted in cracking along the elbow making the profile more vulnerable to degradation and 'blooming' where the glass fibres are exposed. With PU coating and correct installation methods the degradation could have been avoided.

All **Envirowalk** FRP **EnviroMesh**, **EnviroGrate** and **EnviroTreads** are manufactured using only premium grade, unblended Type I (Iso) resin, ATH filler, maximum anti-UV, E-Glass fibres and fine grit P5 rated anti-slip surface.



Envirowalk PRODUCTS USED:

H30 (30mm thick) 38x38 grid **EnviroGrate** and **EnviroTread** Landing panels Type I resin, 10g UV9, ATH filler, E-Glass fibres with fine carborundum barefoot friendly grit anti-slip surface.

H25+5 (30mm thick) **EnviroCT** panels Type I resin, 10g UV9, ATH filler, E-Glass fibres with fine carborundum barefoot friendly grit anti-slip surface.

EnviroTread pultruded F-Kick rail – The customer rejection of the cost of for the protective coating causing this to fail.

Envirowalk Pty Ltd ABN: 29 141844671

13 Katrina St
Lake Heights
NSW
AUSTRALIA

Phone 1: 61 (0)2 42 741 563

Phone 2: 61 (0)2 42 749 888

email: envirowalk@bigpond.com

Web: www.envirowalkgrating.com